

Summary

The purpose of this document is to detail the updates incorporated into the Platinum 6.1 Patch 203 release. Please note that this version of Platinum 6.1 is only compatible with Windows 11.

Contents

Products Affected	2
Detailed Description: Platinum 6.1 Patch 203	2
Features and Updates	3
New Methods File.....	4
New Gels File	4
Improvement to population of the Work List.....	5
Timestamp added to Gateway sessions	5
Keep alive functionality added for Platinum to Gateway connection	5
Installing Platinum without a local SQL database (for remote networked PCs).	6
Improvement to used reagent logging (CEP058)	11
Limitations	12
Contact.....	12

Products Affected

400600 Platinum Analysis Software

Detailed Description: Platinum 6.1 Patch 203

Platinum 6.1 software is the interface between the V8, or gel scanner, and the user. It allows for complete management, analysis and interpretation of results and it provides a comprehensive set of analytical tools, editing tools and reporting tools for analysing and reporting data.

Platinum 6.1 Patch 203 is designed to provide updates and additional functionality. As Platinum 6.1 is the operating software of the V8 and an analytical software package, there are many amendments and modifications to the software expected as we continue to improve and develop the instrument and the assays on-board. As such we have scheduled release dates for Platinum upgrades, which incorporate prioritised software fixes/solutions and features. Scheduling the release of the software upgrades allows Helena Biosciences Europe to ensure as many fixes and features are incorporated into one upgrade, thus minimising the disruption this can cause to systems in the field and reducing the number of upgrades required. The release dates of these patches are prioritised. All scheduled releases are extensively verified and must pass regression testing before being released.

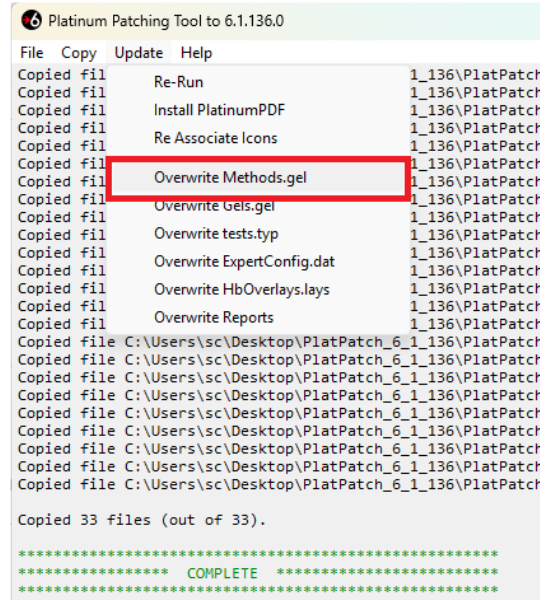
This patch is only compatible with Platinum 6.1.200 and above.

Features and Updates

Update	Description
Windows 11	Platinum patch compatible with Windows 11 only .
GUI	This Platinum version is Touchscreen only .
MS SQL	MS SQL 2022 database only.
	Installing Platinum without a local SQL database (for remote networked PCs).
Methods File	New Methods file MF1019.
Gels file	New Gels file GF1012.
LIMS	Improvement to population of the Work List.
LIMS Gateway	Timestamp added to Gateway sessions.
	Keep alive functionality added for Platinum to Gateway connection.
Expert System	Not available in this version of Platinum.
Used Reagent Logging	Improvement to used reagent logging (CEP058)

New Methods File

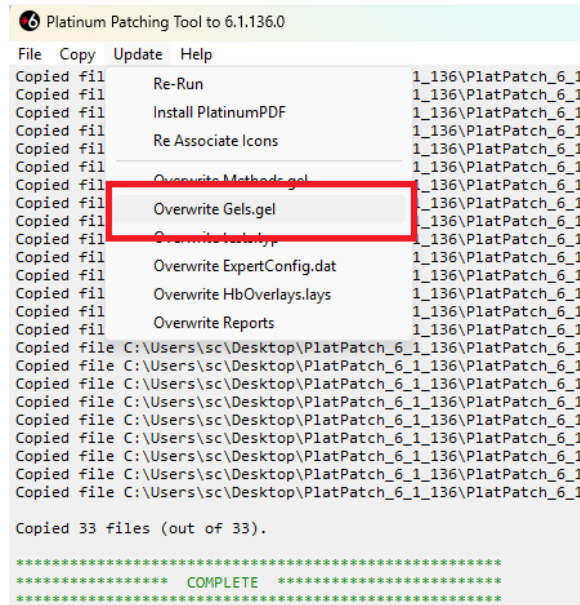
New methods file MF1019 can now be updated through the patching tool. To do this, run the patching tool and before closing the window go to **Update > Overwrite Methods.gel**.



Please contact Support if you have a bespoke methods for assistance in incorporating these updates.

New Gels File

New gels file GF1012 can now be updated through the patching tool. To do this, run the patching tool and before closing the window go to **Update > Overwrite Gels.gel**.

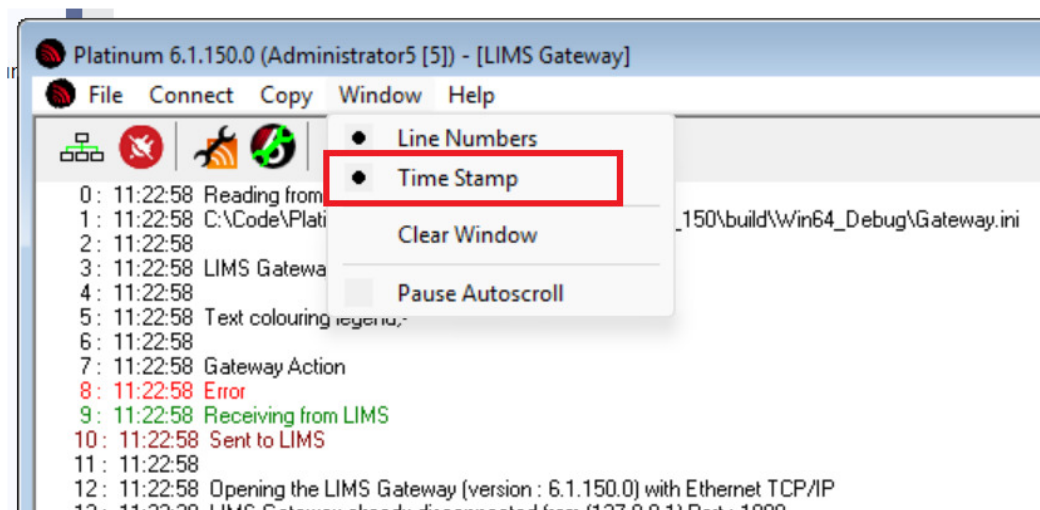


Improvement to population of the Work List

Previously, when LIMS was queried in the Work List, it would only populate when forced to update by selecting the Work List page icon. Now, the Work List will be populated immediately when LIMS is queried.

Timestamp added to Gateway sessions

A timestamp can now be displayed through Gateway sessions. To enable, go to **Window > Time Stamp** in the Gateway session:

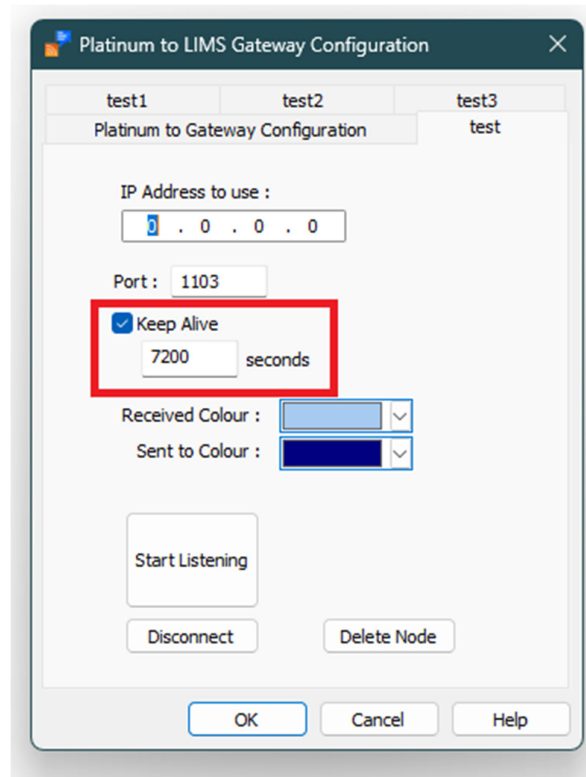


Please contact Technical Support for further information on LIMS Gateway setup in the Windows 11 version of Platinum 6.1 (support@helena-biosciences.com).

Keep alive functionality added for Platinum to Gateway connection

Each incoming connection from Platinum to Gateway can now have a 'Keep Alive' option enabled. This will initiate a probe packet with no data in when the 'keep alive' timer reached zero. It acts as a duplicate 'ACK', with a reply from Platinum confirming that the connection is still alive and preventing the connection from timing out. It also acts as a warning if the connection from the Platinum side has failed before it is able to notify you. This applies to TCP/IP connections only.

To enable the use of this functionality in the Gateway session, go to the **Platinum to LIMS Gateway Configuration** window, and for each of the connected Platinum instances the 'Keep Alive' option can be activated. The box underneath allows the frequency of the probe packets to be configured. For example, 7200 seconds means it would be sent every 2 hours:



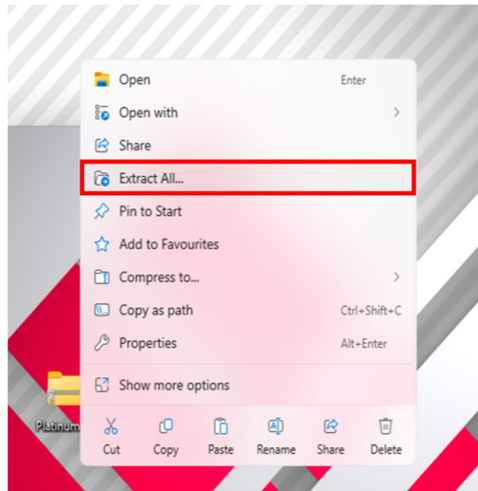
Note: A reconnection is required when configuring 'Keep Alive', it is something that is only set on the initial connection.

Installing Platinum without a local SQL database (for remote networked PCs).

For remote networked users, Platinum has the ability to be installed without a local SQL server and therefore without access to a local SQL database. On first opening Platinum following an install, the customise database window will allow the selection of a networked database when no local database has been found.

To install Platinum without the SQL server, please follow these steps:

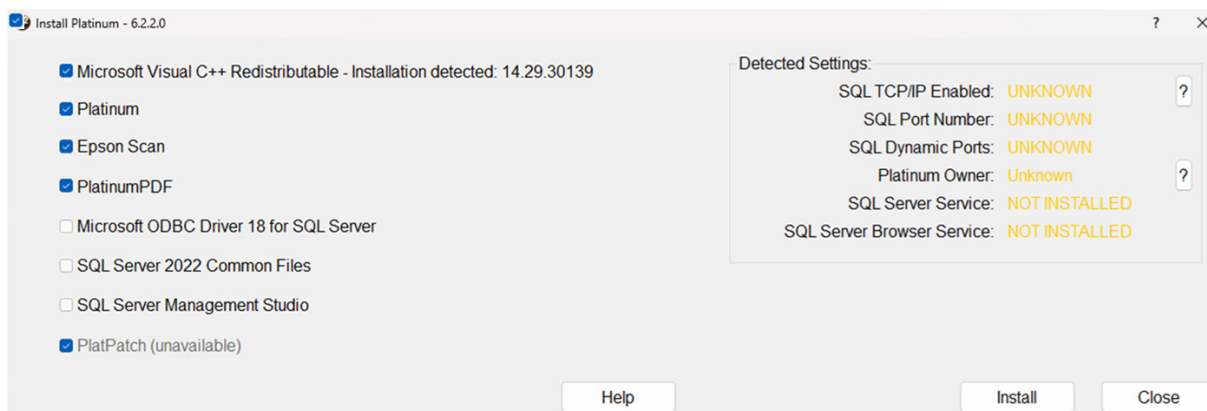
Please copy the Platinum6_1Win11Installer.zip to the desktop of the PC and unzip it (right click on the zipped file and select 'Extract All'). Open the extracted folder.



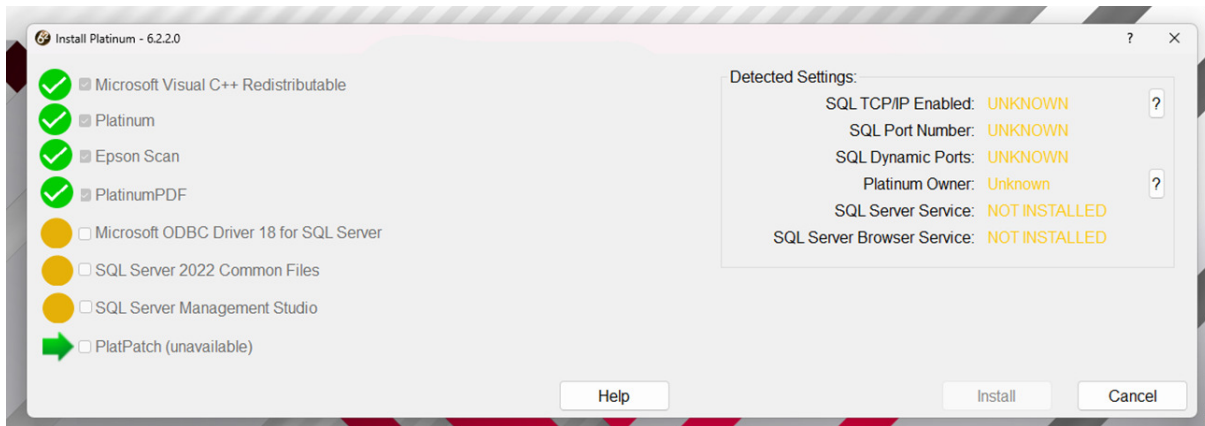
Double click on the PlatinumInstaller.

EPSON Scan	10/03/2025 10:10	File folder	
Logs	10/03/2025 10:10	File folder	
Microsoft ODBC Driver 18 for SQL Server	10/03/2025 10:10	File folder	
Microsoft Visual C++ Redistributable	10/03/2025 10:10	File folder	
Platinum	10/03/2025 10:10	File folder	
PlatinumPDF	10/03/2025 10:10	File folder	
PlatPatch	07/02/2025 14:11	File folder	
SQL Server 2022 Common Files	10/03/2025 10:11	File folder	
SQL Server Management Studio	10/03/2025 10:11	File folder	
PlatinumInstaller	07/02/2025 14:11	Compiled HTML ...	1,463 KB
PlatinumInstaller	19/02/2025 16:48	Application	4,732 KB

By default the installer will select all features that aren't on the PC. If the SQL Server does not need to be installed, untick the SQL specific options:



During install these features will be marked with an orange icon to identify them as skipped during install.

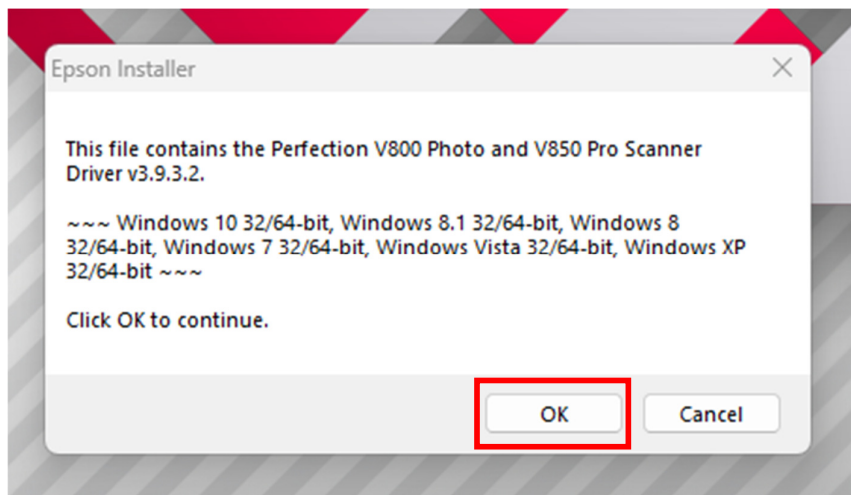


Platinum install is performed silently in the background of the installer. As such, this section does not require user input and will display a green tick once Platinum installation is complete.

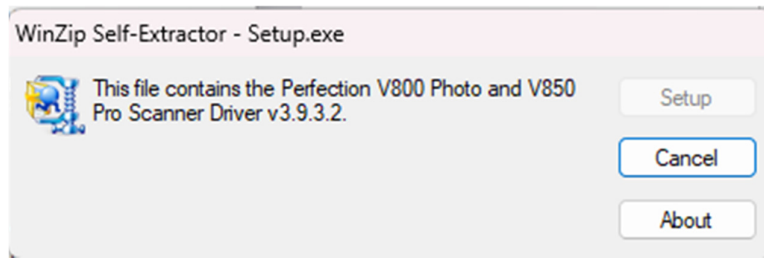
Epson Scan

The installer will automatically move on to the next component and start the installation process for Epson Scan.

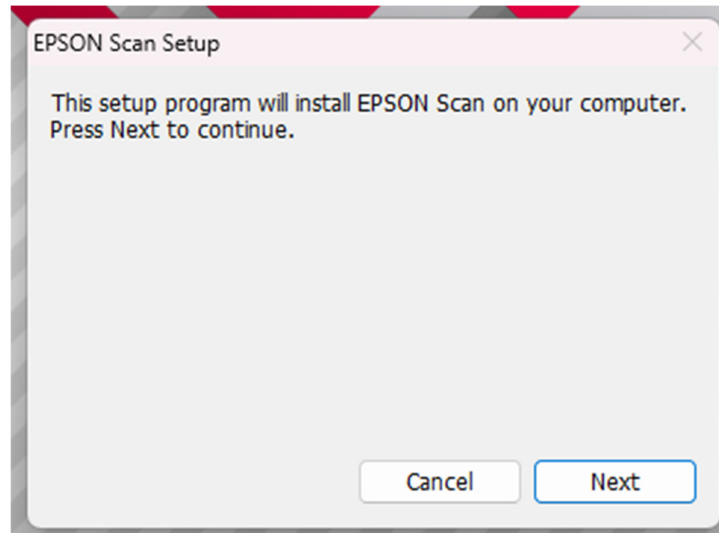
Click OK to continue with the Epson install.



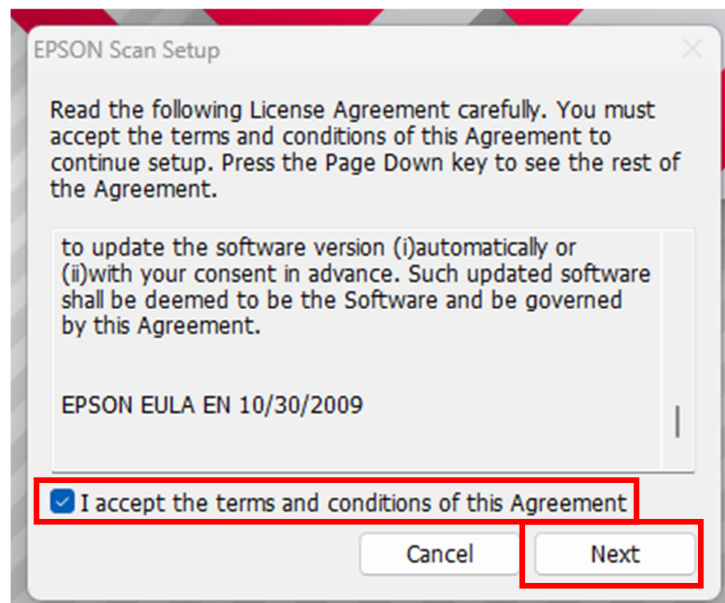
This pop up will appear followed by the Epson Scan Setup:



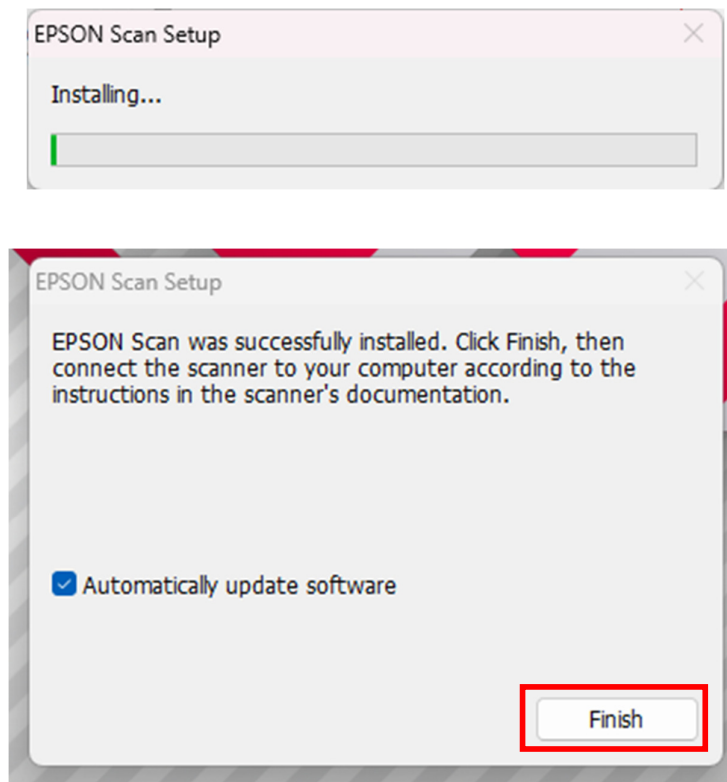
Select Next.



Accept the terms and conditions and select Next.

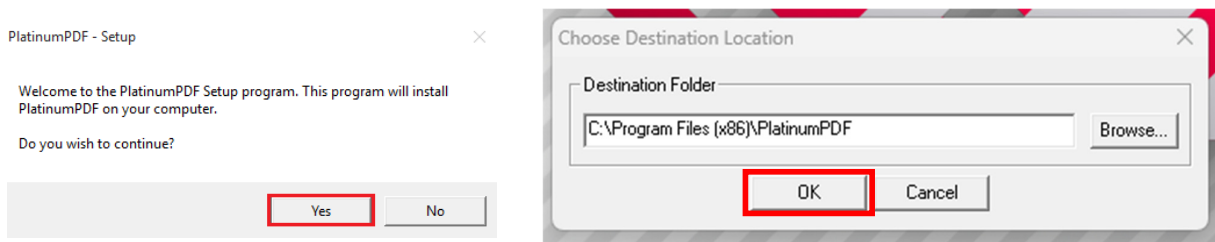


Epson scan will begin to install. Select Finish when it is complete.

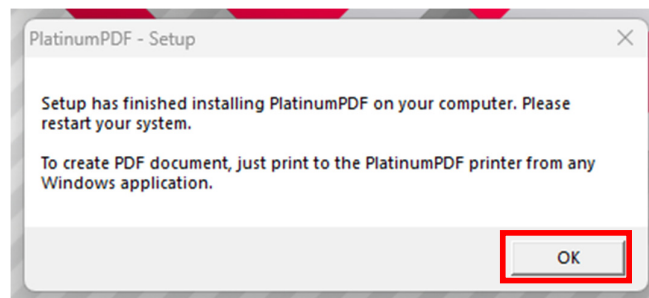


Platinum PDF

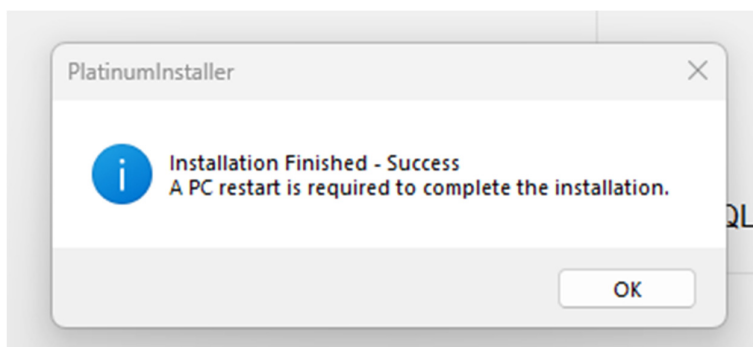
Click Yes when requested. Select the location for the Platinum PDF installation. It is recommended to keep it in the default location. Click OK.



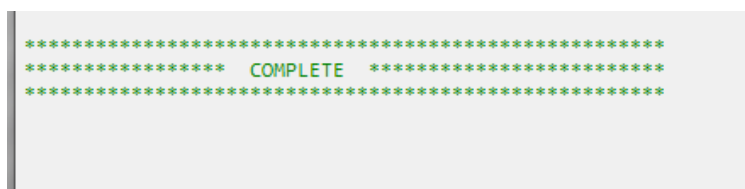
Click OK when installation is complete.



Once the installation is complete, the installer will prompt for a PC restart to complete the installation.



If a PlatPatch is available with this installer it will run automatically. When the box shows 'Complete' close the PlatPatch window.



When this is complete, close the Platinum installer and restart the PC.

For additional information on Platinum installation for Windows 11, please contact Technical Support.

Improvement to used reagent logging (CEP058)

Previously, when a reflex test was performed, Platinum would update original runs with any newly added buffers as 'used' liquids in the run (text of the used liquids are shown in bold). It would also log all antisera against all runs in an SP-ID:

250503408301

04 Jun 2025 15:09

Serum Protein ID (G, A, M, K, L) sp_idigg

250503408301

04 Jun 2025 15:09

V8 Runtime Reagents

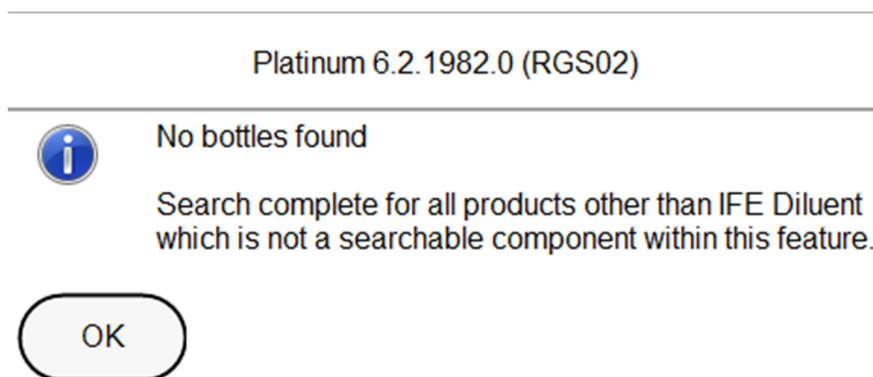
Barcode	Reagent 1	Reagent 2	Reagent 3	Reagent 4	Reagent 5	Reagent 6	Reagent 7	Reagent 8	Reagent 9	Reagent 10
6A403B03B4B55272	6A403B03B4B55272	QGB32B9QG	0000000000	U4UN49NC65	99CB9JQKR8	27TK2OK76	A4FAGPAUCB	RT0V8D859	0000000000	
Name	Serum Protein Diluent	Serum Protein Diluent	IFE Diluent (Gel)	none	IgG (Green)	IgA (Red)	IgM (Blue)	IgK (Orange)	IgL (Purple)	none
Expiry Date	0426	1027	0101	0327	0427	0427	0427	0427	0101	
Lot	11990795	10	0	12	28	18	7	9	0	
Nr. in batch	541	542	83	0	315	97	158	47	404	0
Nr. of tests	200	200	600	0	50	50	50	50	50	0
Nr. remaining										
Cap Opened on	03/06/2025	04/06/2025	04/06/2025	n/a	04/06/2025	04/06/2025	04/06/2025	04/06/2025	04/06/2025	n/a
Open Stability (days left)	181	182	n/a	n/a	28	28	28	28	28	n/a

Now, used liquid logging is more accurate by showing only the liquids used for the sample run in bold. Platinum will not retrospectively add newly added liquids to previous runs. It will also not update newer runs with liquids used in older runs.

This does not affect the logging of the onboard containers, all reagents onboard will still be displayed as previously.

All 'used' (highlighted) reagents and buffers for capillary electrophoresis are searchable using the Reagent Search function (*Configure > Reagent Search*).

For gel tray preparation, used reagents will be highlighted, however, **they will not be searchable via the Reagent Search:**



Limitations

Changes to LIMS settings are tested to the best of our ability, however, we cannot be held liable for any changes that may be required to the software, or any laboratory software, used for LIMS integration as a result of this update.

Platinum PDF should only be used via the 'Print to Platinum PDF' functions within the Platinum 6.1 software and should never be set as the default printer. Alternate PDF creators are not recommended for use within Platinum.

This patch has been tested internally by Helena Biosciences Europe to ensure the core functionality is as expected, however, user specific usage cannot be reviewed. A review of the new features outlined in this document and local change control/verification of Platinum performance should be carried out to ensure continuity of performance.

Contact

Please contact Technical Support (support@helena-biosciences.com) for further details.